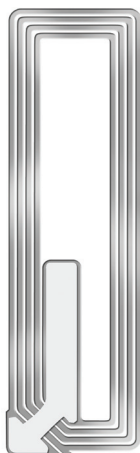


CLEAR ENHANCED PERFORMANCE LABELS

Clear Product Protection. Perfect Brand Promotion.



3210 Clear EP Label

It's Clear...

- Place Clear Enhanced Performance (EP) labels over barcodes - important data can still be viewed and scanned.
- Increase sales and reduce shrink through secure open merchandising.
- Preserve product branding.
- Apply labels in store or at source.
- Embrace a revolutionary new method of product protection.

Uses less aluminum, paper and plastics than standard labels; reduces waste by up to 65%

Provides a clean look that preserves product branding

View and scan barcode through clear window



Protect even the smallest merchandise

CLEAR ENHANCED PERFORMANCE LABELS

Setting the Standards

Checkpoint's EP labels represent a quantum leap in radio-frequency (RF) technology, providing retailers and manufacturers with the highest-performing RF labeling solutions on the market, including the world's smallest RF label.

Checkpoint has a solution for virtually every need and supports both hand application in-store or source tagging applications at the point of manufacture.



EVOLVE, the best-performing and most intelligent EAS platform available today



EVOLVE and EP Labels: The Perfect Combination

When used in concert with Checkpoint's EVOLVE EAS platform, performance of Clear EP labels is increased by up to 60%.

3210 Clear EP Label Specifications ***

Frequency:	8.2 MHz
Label Size:	0.75 x 2.56 in. (19 x 65 mm)
Custom Print Options:	Yes
Designed for @ Source Integration:	Yes
Roll Count:	2,000
Case Count:	20,000



Checkpoint RF labels are classified into three groups defining performance, service level and added value. According to the classification the labels are branded with 1, 2, or 3 stars.

Standard Label * / Premium Label ** / Specialty Label ***



Checkpoint Systems, Inc.

101 Wolf Drive, P.O. Box 188
Thorofare, NJ 08086

www.CheckpointSystems.com

Tel.: 800-257-5540 or 856-848-1800

E-mail: marketingleads@checkpt.com

Checkpoint

Helping Retailers Grow Profitably